

RESEARCH

Open Access



Clinical performance of an antibody-free assay for plasma A β 42/A β 40 to detect early alterations of Alzheimer's disease in individuals with subjective cognitive decline

María Pascual-Lucas^{1*}, José Antonio Allué¹, Leticia Sarasa¹, Noelia Fandos¹, Sergio Castillo¹, Jose Terencio¹, Manuel Sarasa^{1^}, Juan Pablo Tartari², Ángela Sanabria^{2,3}, Lluís Tárraga^{2,3}, Agustín Ruíz^{2,3}, Marta Marquí^{2,3}, Sang Won Seo⁴, Hyemin Jang⁴, Mercè Boada^{2,3} and on behalf of the FACEHBI study group

Abstract

Background Accessible and cost-effective diagnostic tools are urgently needed to accurately quantify blood biomarkers to support early diagnosis of Alzheimer's disease (AD). In this study, we investigated the ability of plasma amyloid-beta (A β)42/A β 40 ratio measured by an antibody-free mass-spectrometric (MS) method, ABtest-MS, to detect early pathological changes of AD.

Methods This cohort study included data from the baseline and 2-year follow-up visits from the Fundació ACE Healthy Brain Initiative (FACEHBI) study. Plasma A β 42/A β 40 was measured with ABtest-MS and compared to ¹⁸F-Florbetaben PET as the reference standard (cutoff for early amyloid deposition of 13.5 centiloids). Cross-validation was performed in an independent DPUK-Korean cohort. Additionally, associations of plasma A β 42/A β 40 with episodic memory performance and brain atrophy were assessed.

Results The FACEHBI cohort at baseline included 200 healthy individuals with subjective cognitive decline (SCD), of which 36 (18%) were A β -PET positive. Plasma A β 42/A β 40 levels were significantly lower in A β -PET positive individuals (median [interquartile range, IQR], 0.215 [0.203–0.236]) versus A β -PET negative subjects (median [IQR], 0.261 [0.244–0.279]) ($P < .001$). Plasma A β 42/A β 40 was significantly correlated with A β -PET levels ($\rho = -0.390$; $P < .001$) and identified A β -PET status with an area under the receiver operating characteristic curve (AUC) of 0.87 (95% confidence interval [CI], 0.80–0.93). A cutoff for the A β 42/A β 40 ratio of 0.241 (maximum Youden index) yielded a sensitivity of 86.1% and a specificity of 80.5%. These findings were cross-validated in an independent DPUK-Korean cohort (AUC 0.86 [95% CI 0.77–0.95]). Lower plasma A β 42/A β 40 ratio was associated with worse episodic memory performance and increased brain atrophy. Plasma A β 42/A β 40 at baseline predicted clinical conversion to mild cognitive impairment and longitudinal changes in amyloid deposition and brain atrophy at 2-year follow-up.

[^]Manuel Sarasa is deceased.

*Correspondence:

María Pascual-Lucas

mpascual@araclon.com

Full list of author information is available at the end of the article



© The Author(s) 2023. **Open Access** This article is licensed under a Creative Commons Attribution 4.0 International License, which permits use, sharing, adaptation, distribution and reproduction in any medium or format, as long as you give appropriate credit to the original author(s) and the source, provide a link to the Creative Commons licence, and indicate if changes were made. The images or other third party material in this article are included in the article's Creative Commons licence, unless indicated otherwise in a credit line to the material. If material is not included in the article's Creative Commons licence and your intended use is not permitted by statutory regulation or exceeds the permitted use, you will need to obtain permission directly from the copyright holder. To view a copy of this licence, visit <http://creativecommons.org/licenses/by/4.0/>. The Creative Commons Public Domain Dedication waiver (<http://creativecommons.org/publicdomain/zero/1.0/>) applies to the data made available in this article, unless otherwise stated in a credit line to the data.

Conclusions This study suggests that plasma A β 42/A β 40, as determined by this MS-based assay, has potential value as an accurate and cost-effective tool to identify individuals in the earliest stages of AD, supporting its implementation in clinical trials, preventative strategies and clinical practice.

Keywords Alzheimer's disease, Amyloid, A β 42/A β 40, Ratio, Biomarkers, Plasma, Blood biomarkers, Mass spectrometry, Subjective cognitive decline

Background

Alzheimer's disease (AD) is the most common form of dementia affecting 55 million people worldwide in 2021 [1]. The manifestation of clinical symptoms in AD is preceded by a long preclinical phase where cognitively normal individuals present neuropathological changes in the brain. In this context, supporting biomarker information is particularly important to assist diagnosis and prognosis of at-risk individuals.

The earliest pathological hallmark of AD, brain amyloid- β (A β) deposition, can be reliably identified by two well-established methods: cerebrospinal fluid (CSF) and positron emission tomography (PET)-based A β measures [2, 3]. However, the widespread implementation of these biomarkers to facilitate patient screening in clinical trials or in routine clinical practice is hampered by their invasiveness, costs and limited availability. Thus, more accessible and cost-effective diagnostic approaches, such as blood-based biomarkers, are urgently needed.

The reliable measurement of A β in plasma results technically challenging due to the low abundance of the peptides in a complex matrix such as plasma [4]; therefore, highly sensitive, accurate and robust assays are desirable. In recent years, technological advances have made possible the accurate and robust quantification of plasma A β 40 and A β 42. Multiple assays, either immunoassays or mass-spectrometry (MS)-based methods, have proved that plasma A β 42/A β 40 ratio is an accurate surrogate biomarker of brain amyloid pathology [5–8]. However, recent round robin studies have found discrepancies in the quantification of plasma A β 40 and specially A β 42 among different assays [9]. In addition, emerging evidence has suggested that MS-based methods identify brain A β deposition more accurately than immunoassays [10–12], probably because they are less susceptible to the matrix effect present in such a complex fluid. Nevertheless, immunoprecipitation-MS (IP-MS) methods are elaborate, high-cost and present modest throughput, which limit their accessibility in clinical trials or routine clinical practice.

To overcome these challenges, Araclon Biotech has developed a novel antibody-free HPLC-MS/MS method (ABtest-MS) for the quantification of plasma A β 42/A β 40 by performing a direct extraction of A β peptides from plasma. This innovative procedure

requires neither IP nor digestion steps, which significantly reduces time and costs, and ultimately results in a more affordable and accessible assay. The main differential characteristics of ABtest-MS with respect to other MS-based assays are summarized in Supplementary Table 1.

In this study, we aimed to validate the clinical utility of plasma A β 42/A β 40, as determined with ABtest-MS, by evaluating its predictive ability to detect brain amyloid deposition in healthy individuals with subjective cognitive decline (SCD) from the Fundació ACE Healthy Brain Initiative (FACEHBI) cohort [13]. These findings have been cross-validated in an independent DPUK-Korean cohort. Furthermore, we have tested the association of ABtest-MS measures of plasma A β 42/A β 40 with cognitive performance and brain atrophy. Finally, we have explored the ability of plasma A β 42/A β 40 to predict clinical progression to mild cognitive impairment (MCI) and longitudinal changes in amyloid deposition and brain atrophy at 2 years of follow-up.

Methods

Study participants

The study included 200 individuals from the FACEHBI cohort, a convenience sample which comprises subjects diagnosed with SCD embedded in a long-term single-centre prospective observational study of cognition, biomarkers and lifestyle, performed at Ace Alzheimer Center Barcelona. SCD was defined as the coexistence of cognitive complaints (a score of ≥ 8 on the Spanish Modified Questionnaire of Memory Failures Every day [MFE-30]) with normal performance on a comprehensive neuropsychological battery. Further information on study design and specific inclusion/exclusion criteria have been described in detail elsewhere [13]. All subjects underwent a complete neurological and neuropsychological examination, a set of self-administered questionnaires and a battery of multimodal biomarkers, including apolipoprotein E (APOE) genotyping, magnetic resonance imaging (MRI) and ^{18}F -Florbeta-ben-PET (FBB-PET). Detailed description of these procedures is provided below and in the [Supplementary Information](#). For the present study, data from baseline visit and 2-year follow-up (V2) were analysed.

Blood sampling and plasma A β measurements

Blood samples were collected in polypropylene vials with ethylenediaminetetraacetic acid (EDTA) and immediately refrigerated. Samples were 30 min centrifuged (4000 g) within 24 h from extraction to collect the plasma and then aliquoted and frozen at -80°C until analysis according to recommended plasma handling standardized operating procedures [14].

Full-length A β 1-40 and A β 1-42 concentrations were measured from 200 μl of plasma using ABtest-MS, a novel antibody-free liquid chromatography-differential mobility spectrometry-triple quadrupole mass spectrometric (HPLC-DMS-MS/MS) method (Araclon Biotech, Zaragoza, Spain). Calibration curves were prepared in human plasma after spiking ^{15}N -A β 40 and ^{15}N -A β 42 (rPeptide, Watkinsville, GA, USA) at seven concentration levels. Calibration ranges were 50–1000 pg/ml for ^{15}N -A β 40 and 10–200 pg/ml for ^{15}N -A β 42. Two identical calibration curves were used in each analytical run, one at the beginning and one at the end of the sequence, in order to correct for potential analytical drift during the run time. Additionally, three quality control samples (per duplicate) were also prepared by spiking three concentration levels (high: 750/150, mid: 400/75 and low: 150/30 pg/ml for ^{15}N -A β 40 and ^{15}N -A β 42, respectively) in human plasma. Quality control samples were uniformly distributed along the sequence in each run. Analytes were extracted directly from plasma as no IP procedure was followed. Intact A β 40 and A β 42 species were measured as no enzymatic digestion was performed. 10 μl of deuterated internal standard solution (^2H -A β 40 and ^2H -A β 42, Bachem AG, Bubendorf, Switzerland) were spiked in all samples and response ratios corresponding to endogenous species in study samples (^{14}N -A β 40/ ^2H -A β 40 and ^{14}N -A β 42/ ^2H -A β 42) were interpolated in the mean calibration curve of each analytical run.

The analytical platform was composed of a QTRAP 6500⁺ hybrid linear ion trap-triple quadrupole mass spectrometer, fitted with a differential mobility spectrometry interface (DMS, SelexION⁺) and an IonDrive Turbo V Ions Source, coupled to a M3 Micro LC system (all from Sciex, Framingham, MA, USA). Analyst 1.6.3 software (Sciex) was used for data acquisition, while MultiQuant 3.0.3 software (Sciex) was used for data processing.

Extracts were loaded on a YMC Triart C18, $0.3 \times 5\text{ mm}$, 5 μm trap column (YMC, Kyoto, Japan) at 50 $\mu\text{l}/\text{min}$ for 1 min in 5% acetonitrile (AcN) 0.1% formic acid (FA). After the loading step, analytes were eluted and separated on a HALO ES-C18, 400 \AA , 3.4 μm , $0.3 \times 50\text{ mm}$ analytical column (Advanced Materials Technology, Wilmington, DE, USA) kept at 50°C in a column oven. Mobile phase A

was 0.1% FA in water and mobile phase B was 0.1% FA in AcN. A linear gradient from 15% to 40% B in 3 min was used for separation. Total gradient time was 5.5 min, and total cycle time was 9 min (trapping + separation + column regeneration). The mass spectrometer was operated in positive ion mode and multiple reaction monitoring (MRM) acquisition mode. MRM transitions for ^{15}N , ^{14}N (endogenous) and ^2H -A β species were monitored. Dwell time was set at 45 ms. MS acquisition time was 5 min after sample elution from the trap column. Suitability test samples were analysed every day at the beginning of the analytical run in order to check system performance and equal transmission for light (^{14}N) and heavy (^{15}N) species.

Data of sensitivity and parallelism of ABtest-MS are provided in Supplementary Table 2.

All liquid chromatography-mass spectrometry analyses were performed by personnel who were blind to participant information.

MRI acquisition

MRI scans were performed on a 1.5-T Siemens[®] Magnetom Aera (Erlangen, Germany) using a 32-channel head coil. Anatomical T1-weighted images were acquired using a rapid acquisition gradient-echo 3D magnetization-prepared rapid gradient-echo (MPRAGE) sequence with the following parameters: repetition time (TR) 2.200 ms, echo time (TE) 2.66 ms, inversion time (TI) 900 ms, flip angle 8° , field of view (FOV) 250 mm, slice thickness 1 mm, and isotropic voxel size $1 \times 1 \times 1\text{ mm}$. Subjects also received axial T2-weighted, 3D isotropic fast fluid-attenuated inversion recovery (FLAIR) and axial T2*-weighted sequences to detect significant vascular pathology or microbleeds. Brain atrophy was assessed using ventricular and hippocampal volume data normalized by total intracranial volume.

FBB-PET acquisition

FBB-PET scans were obtained with a Siemens[®] Biograph molecular-CT machine. PET images were acquired in 20 min starting from 90 min after intravenous administration of 300 Mbq of ^{18}F -Florbetaben radio tracer (NeuraCeq[®]), administered as a single slow intravenous bolus (6 s/ml) in a total volume of up to 10 ml. MRI cortical and subcortical segmentation of the T1-weighted images was carried out with Freesurfer 5.3 (<https://surfer.nmr.mgh.harvard.edu/>). FBB-PET scans were processed with the FSL 5.0 package (<https://fsl.fmrib.ox.ac.uk/fsl/fslwiki/>). FBB-PET images were coregistered onto structural images, and the standard uptake value ratio (SUVR) was determined as the mean value of the cortical regions segmented on MRI, and normalized by the cerebellum as the reference region. Centiloid (CL) values

were calculated as previously described [15]. Cutoff for FBB-PET positivity was established at > 13.5 CL corresponding to early amyloid deposition [16]. All images underwent an automated de-identification process prior to analysis.

Independent validation cohort

The DPUK-Korean cohort was enrolled in the memory clinic at Samsung Medical Center (Seoul, Korea) between 2017 and 2019. Participants classified as old controls (OC, cognitively unimpaired [CU] individuals older than 45 years) were included in the validation cohort. OCs were defined to have normal cognition on neuropsychological tests [17] without a history of neurological or psychiatric disorders. Specific inclusion/exclusion criteria, A β -PET imaging acquisition and analysis, and plasma procedures are described elsewhere [18]. This study was approved by the institutional review board of Samsung Medical Center.

Statistical analysis

All statistical analyses and data visualization were carried out using GraphPad Prism v5.03 (GraphPad Software, San Diego, CA, USA), SPSS v18 (IBM, Armonk, NY, USA) or MedCalc v20.015 (MedCalc Software, Ostend, Belgium). Group differences were examined using the Mann-Whitney and Chi-square tests for continuous and categorical variables, respectively. Multiple comparisons were assessed with the Kruskal-Wallis test followed by the Dunn's pairwise test with adjustment for multiple comparisons (Bonferroni correction). Spearman correlation coefficient (ρ) was employed to investigate correlations between continuous variables. Logistic regression models and receiver operating characteristics (ROC) curves were constructed to evaluate the discriminative accuracy of brain amyloid deposition. A β -PET imaging was chosen as the reference standard for comparative purposes as it is a recognized biomarker of brain amyloid burden. Area under the ROC curve (AUC) of different models were compared using DeLong test. External validation across independent cohorts was performed by testing the model (estimates and intercept) derived in FACEHBI, on the DPUK-Korean cohort. To determine the association between plasma A β 42/A β 40 and longitudinal measures of cognition, brain amyloid deposition and brain atrophy, participants were classified as plasma A β 42/A β 40(+) or A β 42/A β 40(−) by applying a cutoff of 0.241 corresponding to the maximum Youden index. Kaplan-Meier analysis with log-rank test was performed to determine the progression to MCI or A β -PET(+) status at 2-year follow-up. Two-sided $P < .05$ was considered statistically significant.

Results

Participant characteristics

Demographic and clinical characteristics of study participants from the FACEHBI cohort at baseline are presented in Table 1. In total, 200 participants were included in the study, of which 36 (18%) were classified as A β -PET(+) according to the cutoff for early A β -PET positivity [16]. The median interval between plasma collection and A β -PET scans was 22 days (interquartile range [IQR] 15–43 days). The median age of the population was 67.0 years (IQR 60.0–70.0), being A β -PET(+) individuals older than A β -PET(−) subjects ($P < .001$). Sex and *APOE* ϵ 4 number of alleles were differentially distributed between A β -PET(+) and A β -PET(−) groups ($P = .02$ and $P < .001$, respectively). As previously described [19], the performance of A β -PET(+) participants on the Spanish version of the Face-Name Associative Memory Exam (S-FNAME) and the derived composite S-FNAME Name (SFN-N) was significantly worse than that of A β -PET(−) subjects ($P = .001$ and $P < .001$, respectively).

Association of plasma A β 42/A β 40 with early brain amyloid deposition

A β 40 and A β 42 plasma levels were quantified by ABtest-MS with high accuracy and precision according to analytical performance results (Supplementary Tables 3 and 4). Significant differences were found for A β 40, A β 42 and A β 42/A β 40 plasma levels between the A β -PET(+) and A β -PET(−) groups ($P < .001$ for A β 40 and A β 42/A β 40, $P = .004$ for A β 42) (Table 1, Fig. 1A–C). A β 42 and A β 42/A β 40 plasma levels showed significant negative correlations with A β -PET CL values ($\rho = -0.207$, $P = .003$ for A β 42 and $\rho = -0.390$, $P < .001$ for A β 42/A β 40) (Fig. 1E, F).

Plasma A β 42/A β 40 discriminative ability of A β -PET status

Plasma A β 42/A β 40 ratio predicted A β -PET status accurately with an AUC of 0.87 (95% confidence interval [CI] 0.80–0.93) (Fig. 2A). A cutoff for the A β 42/A β 40 ratio of 0.241, corresponding to the maximum Youden index, yielded a sensitivity of 86.1% and a specificity of 80.5% (Table 2). Concordance rate was 81.5% and, notably, among discordant cases, 32/37 (86.5%) were plasma(+)/PET(−) (Fig. 2C).

ROC curve analyses of plasma A β 40 and A β 42 showed modest discriminating performance (Supplementary Fig. 1) and therefore, only A β 42/A β 40 ratio was used for subsequent analyses.

Accuracy of the plasma A β 42/A β 40 ratio for predicting A β -PET status was further examined by adding age, sex and *APOE* ϵ 4 number of alleles as covariates in the logistic regression model (Fig. 2A, B and D). The median

Table 1 Participant characteristics of the FACEHBI cohort at baseline^a

Characteristic	Aβ-PET(−) ^b	Aβ-PET(+) ^b	<i>P</i> value
Participants , No. (%)	164 (82)	36 (18)	
Age , years	66.0 (60.0–69.5)	70.0 (67.0–73.0)	.0003
Female , No. (%)	110 (67)	16 (44)	.0185
APOE ε4 , No. (%)			
0 alleles	131 (80)	17 (47)	.0002
1 allele	29 (18)	18 (50)	
2 alleles	4 (2)	1 (3)	
Duration of education , years	15.0 (12.0–18.0)	16.0 (10.0–18.0)	.9796
FBB-PET , CL	−3.7 (−7.9–1.7)	34.1 (20.3–57.0)	< .0001
MMSE , score	29 (29–30)	30 (29–30)	.1321
S-FNAME , score	33.5 (22.0–46.0)	24.0 (16.0–33.0)	.0013
SFN-N composite , score	−0.03 (−0.61–0.65)	−0.88 (−1.05 to −0.22)	< .0001
Ventricular volume ^{c,d} , mm ³	24959.5 (19776.4–32028.2)	29061.4 (21966.7–38034.6)	.1079
Hippocampal volume ^{c,d} , mm ³	3606.1 (3421.0–3820.8)	3581.8 (3284.2–3792.7)	.3611
Plasma Aβ40 ^e , pg/ml	269.3 (243.9–294.2)	297.0 (267.2–317.6)	.0009
Plasma Aβ42 ^e , pg/ml	70.2 (63.1–77.3)	63.4 (57.8–72.1)	.0041
Plasma Aβ42/Aβ40 , ratio	0.261 (0.244–0.279)	0.215 (0.203–0.236)	< .0001

Abbreviations: APOE apolipoprotein E, CL centiloid, FBB-PET ¹⁸F-Florbetaben-PET, MMSE Mini-Mental State Examination, S-FNAME Spanish version of the Face-Name Associative Memory Exam, SFN-N S-FNAME-Name

P values in bold correspond to statistically significant results

^a Data are median values (interquartile range), except for the variables participants, female and APOE ε4 number of alleles which are the number of cases (%). Differences between Aβ-PET(−) and Aβ-PET(+) groups were tested using Mann-Whitney and Chi-square tests, as appropriate

^b Aβ-PET status was defined using the cutoff established at 13.5 CL corresponding to early amyloid deposition [16]

^c *N* = 198, data from two participants were lost due to MRI acquisition problems

^d Data correspond to regional volume corrected by total intracranial volume

^e Full-length intact Aβ1-40 and Aβ1-42 were quantified by ABtest-MS

probability score of the full model was higher among Aβ-PET(+) than Aβ-PET(−) participants ($P < .001$) (Fig. 2B). The AUC of the adjusted model increased to 0.89 (95% CI 0.83–0.94) and significantly outperformed the base model including only demographic covariates ($\Delta\text{AUC} = 0.08$, $P = .005$) (Table 2). Both age ($P = .012$) and APOE ε4 number of alleles ($P = .033$) were significant predictors in this model.

Clinical performance of ABtest-MS was confirmed by ROC analysis of the 2-year follow-up visit (Supplementary Table 5). Plasma Aβ42/Aβ40 ratio identified Aβ-PET status with an AUC of 0.86 (95% CI 0.80–0.93). After adjusting with covariates, AUC was further significantly increased to 0.90 (95% CI 0.85–0.96) ($\Delta\text{AUC} = 0.04$, $P = .047$) (Supplementary Fig. 2).

Cross-validation in an independent cohort

To assess the generalizability of the FACEHBI results, we performed an external cross-validation of the predictive model in an independent and trans-ethnic cohort from the DPUK-Korean study. The validation cohort consisted of 148 CU individuals, of which 17 (11%) were classified as Aβ-PET(+) according to the previously published

cutoff of 25.11 direct comparison centiloid units (dcCL) [18]. Participant characteristics of the DPUK-Korean cohort are shown in Supplementary Table 6.

When applying the estimates and intercept established in FACEHBI, we found that plasma Aβ42/Aβ40 adjusted with covariates (age, sex and APOE ε4 number of alleles) discriminated Aβ-PET status in the validation cohort with an AUC of 0.86 (95% CI 0.77–0.95) and an overall accuracy of 81.8% (Fig. 3).

Association of plasma Aβ42/Aβ40 with episodic memory performance and brain atrophy

Participants from the FACEHBI cohort were classified as plasma Aβ42/Aβ40(+) or Aβ42/Aβ40(−) by applying a cutoff of 0.241 corresponding to the maximum Youden index.

Subjects classified as plasma Aβ42/Aβ40(+) performed significantly worse on S-FNAME total score and SFN-N composite score, than those who were Aβ42/Aβ40(−) ($P = .023$ and $P < .001$, respectively) (Fig. 4A and B). A significant positive correlation was found between plasma Aβ42/Aβ40 ratios and the SFN-N composite score (ρ

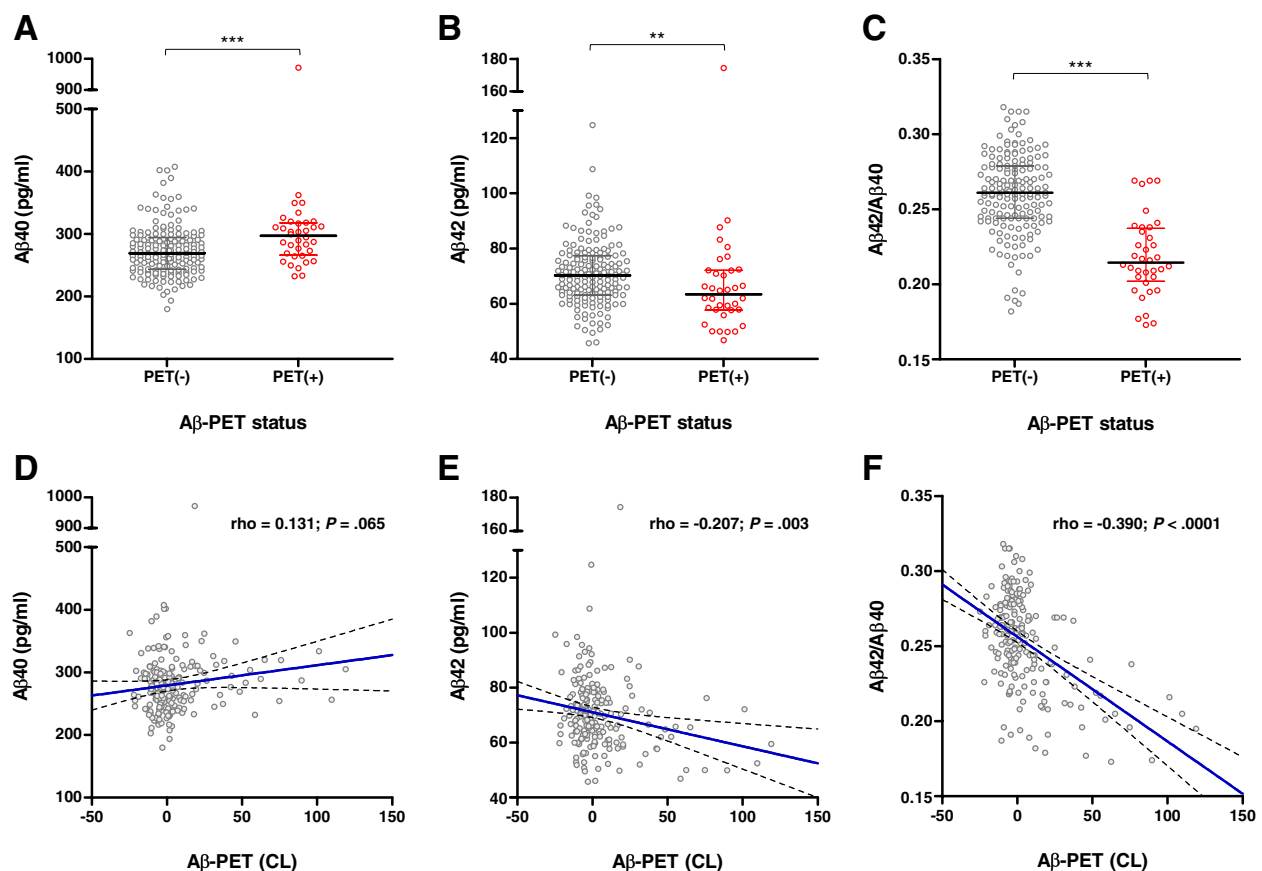


Fig. 1 Association of plasma Aβ levels with brain amyloid deposition. **A–C** Distribution of plasma Aβ40 (**A**), Aβ42 (**B**) and Aβ42/Aβ40 (**C**) levels between Aβ-PET(–) and Aβ-PET(+) groups. Plasma Aβ levels were compared between Aβ-PET(–) and Aβ-PET(+) groups using Mann-Whitney test. ** $P < .01$; *** $P < .001$. Horizontal line depicts median and whiskers depict interquartile range. **D–F** Correlations between Aβ-PET CL and Aβ40 (**D**), Aβ42 (**E**) and Aβ42/Aβ40 (**F**) levels. Solid blue line represents the regression line; dashed lines represent 95% confidence interval. Abbreviations: CL, centiloid

$= 0.193$, $P < .006$), while correlation with S-FNAME total score resulted non-significant (Fig. 4D and C).

Plasma Aβ42/Aβ40 was also associated with brain atrophy, as evidenced by increased ventricular volume in Aβ42/Aβ40(+) individuals in comparison to Aβ42/Aβ40(–) subjects ($P = .022$) (Supplementary Fig. 3A). A trend for reduced hippocampal volume in Aβ42/Aβ40(+) participants was found, although the difference did not reach statistical significance ($P = .097$) (Supplementary Fig. 3B). Correlations between plasma Aβ42/Aβ40 and brain atrophy measures resulted non-significant (Supplementary Fig. 3C–D).

Association of plasma Aβ42/Aβ40 with longitudinal measures of cognition, brain amyloid deposition and brain atrophy

Participants were followed-up on an annual basis and longitudinal measures of clinical diagnosis, brain amyloid deposition and brain atrophy at V2 were included in this study.

At this time frame, 20 (12%) of the 165 individuals who remained in the study progressed to MCI. Stratification of participants according to diagnosis at V2 showed significantly lower plasma Aβ42/Aβ40 at baseline in Aβ-PET(+) subjects compared with Aβ-PET(–), both in the SCD and MCI groups ($P < .001$) (Supplementary Fig. 4). Baseline Aβ42/Aβ40 was associated with conversion to MCI, as SCD subjects who converted to MCI at V2 had significantly lower Aβ42/Aβ40 values at baseline than SCD participants who remained stable ($P = .002$) (Fig. 5A). Kaplan-Meier analysis demonstrated that individuals classified as Aβ42/Aβ40(+) at baseline presented an increased risk of progression to MCI than Aβ42/Aβ40(–) subjects (log-rank $P = .004$) (Fig. 5B).

In this subcohort with Aβ-PET data at follow-up, 31 participants were Aβ-PET(+) at baseline, six converted to Aβ-PET(+) over the 2-year period while 128 remained Aβ-PET(–). Noteworthy, Aβ-PET(+) converters presented significantly lower Aβ42/Aβ40 levels at baseline than

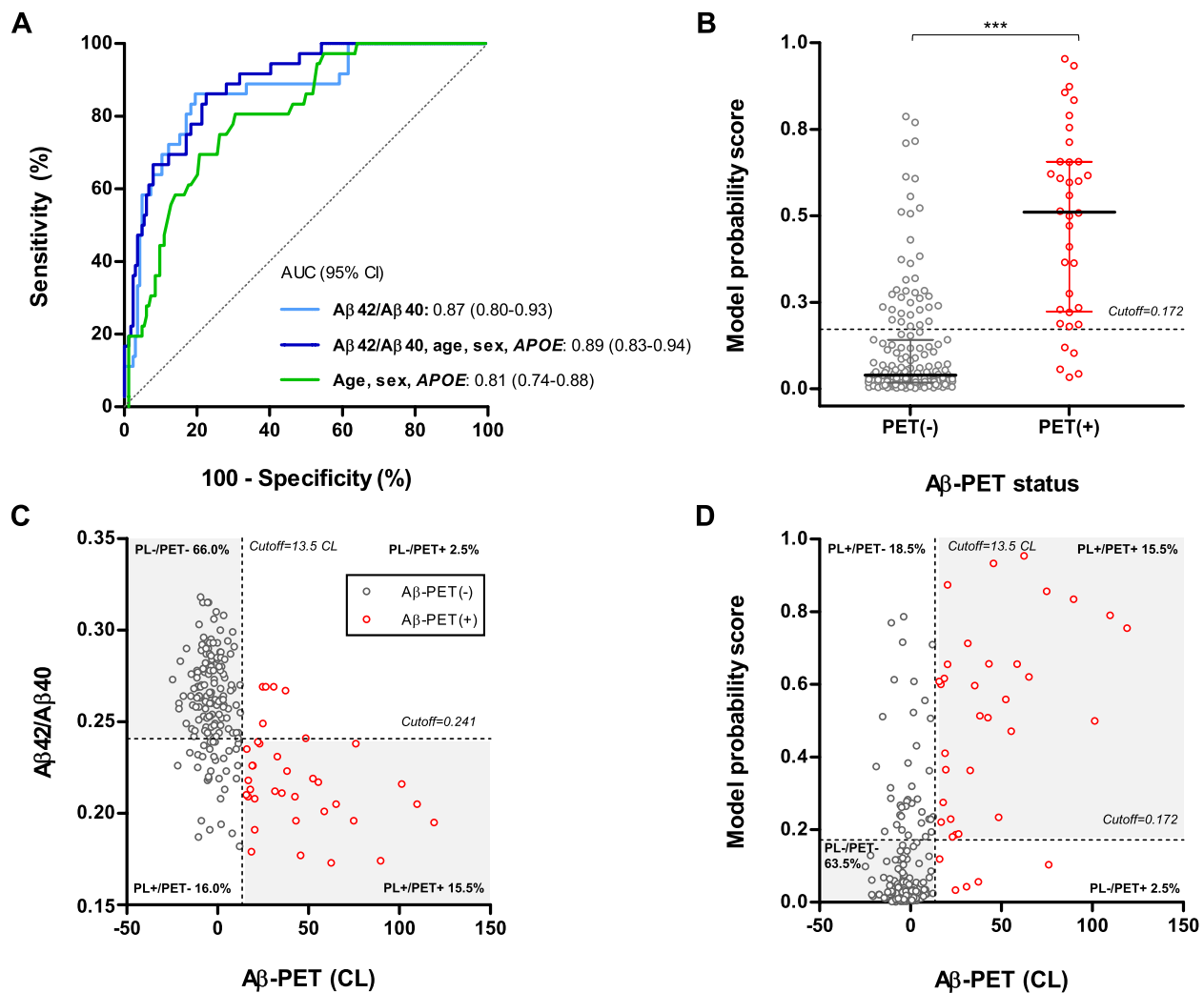


Fig. 2 Plasma Aβ42/Aβ40 discriminative ability of Aβ-PET status. **A** Receiver operating characteristic (ROC) curves for discriminating Aβ-PET status. ROC curves are shown for plasma Aβ42/Aβ40, plasma Aβ42/Aβ40 adjusted with age, sex and APOE ε4 number of alleles, and the demographic model including only age, sex and APOE ε4 number of alleles. **B** Probability scores distribution derived from the full logistic regression model (Aβ42/Aβ40, age, sex, APOE ε4 number of alleles) to predict Aβ-PET status, between Aβ-PET(-) and Aβ-PET(+) groups. Model probability scores were compared between Aβ-PET(-) and Aβ-PET(+) groups using Mann-Whitney test. *** $P < .001$. Horizontal line depicts median and whiskers depict interquartile range. **C**, **D** Concordance plots for plasma Aβ42/Aβ40 levels (**C**) or full model probability scores (**D**) and Aβ-PET CL. Black dots correspond to Aβ-PET(-) individuals; red dots correspond to Aβ-PET(+) individuals. Dashed vertical lines represent the CL cutoff for Aβ-PET positivity. Dashed horizontal lines represent the cutoffs for plasma Aβ42/Aβ40 or the model probability score based on maximum Youden index derived by ROC analyses. Concordant classification is represented by the grey area. Abbreviations: APOE, apolipoprotein E; CL, centiloid; PL, plasma

Table 2 Performance of logistic regression models in predicting Aβ-PET status

Model	AUC	95% CI	Se	Sp	Acc	PPV	NPV	P value ^a
Aβ42/Aβ40	0.87	0.80–0.93	86.1%	80.5%	81.5%	49.2%	96.4%	.1544
Aβ42/Aβ40, age, sex, APOE	0.89	0.83–0.94	86.1%	77.4%	79.0%	45.6%	96.2%	.0054
Age, sex, APOE	0.81	0.74–0.88	80.6%	69.5%	71.5%	36.7%	94.2%	-

Abbreviations: Acc accuracy, APOE apolipoprotein E, AUC Area under the ROC curve, CI confidence interval, NPV negative predictive value, PPV positive predictive value, Se sensitivity, Sp specificity

P values in bold correspond to statistically significant results

^a P values correspond to the comparison of the AUCs of the Aβ42/Aβ40 model and the full model (Aβ42/Aβ40, age, sex, APOE ε4 number of alleles) with the AUC of the model comprising age, sex and APOE ε4 number of alleles, using the DeLong test

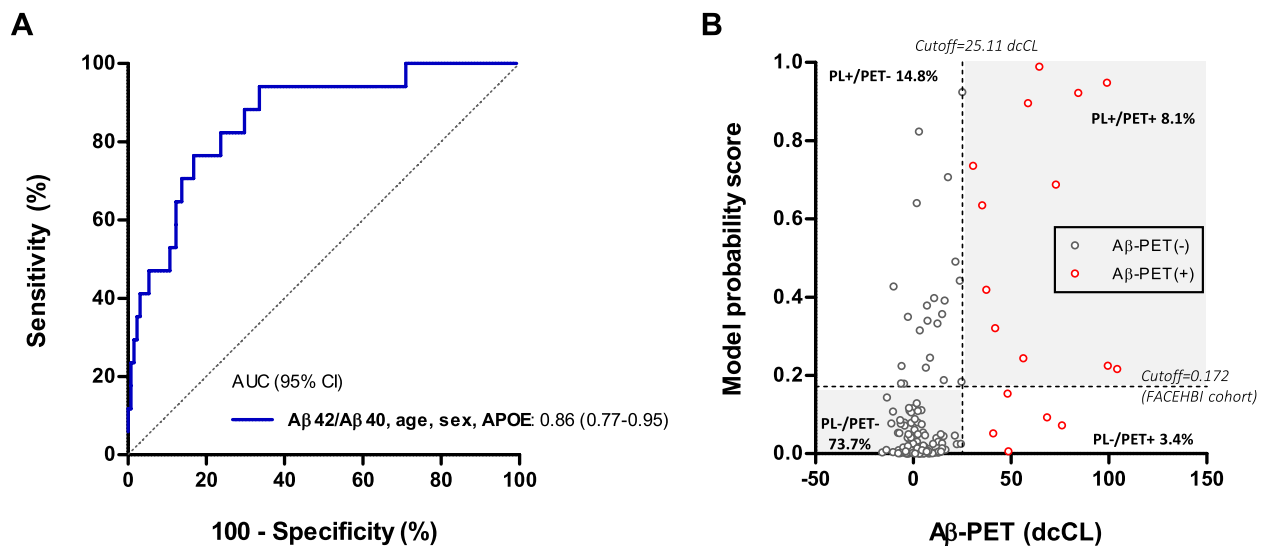


Fig. 3 Cross-validation in an independent cohort. **A** Receiver operating characteristic (ROC) curve for discriminating $A\beta$ -PET status in the DPUK-Korean cohort after applying the estimates and intercept of the model established in FACEHBI that included plasma $A\beta 42/A\beta 40$, age, sex and APOE $\epsilon 4$ number of alleles. **B** Concordance plot for the model probability scores of the validation model and $A\beta$ -PET dcCL. Black dots correspond to $A\beta$ -PET(-) individuals; red dots correspond to $A\beta$ -PET(+) individuals. Dashed vertical line represents the dcCL cutoff for $A\beta$ -PET positivity of the DPUK-Korean cohort. Dashed horizontal line represents the cutoff for the model probability score based on maximum Youden index derived by ROC analyses in FACEHBI. Concordant classification is represented by the grey area. Abbreviations: APOE, apolipoprotein E; AUC, area under the curve; CI, confidence interval; dcCL: direct comparison centiloid units; PL, plasma

those who remained $A\beta$ -PET(-) ($P = .024$) (Fig. 5C). Survival curves confirmed an increased risk of conversion to $A\beta$ -PET(+) in $A\beta 42/A\beta 40(+)$ subjects (log-rank $P = .006$) (Fig. 5D). Consistently, plasma $A\beta 42/A\beta 40$ at baseline was significantly correlated with amyloid accumulation at V2 ($\rho = -0.322$, $P < .001$) (Fig. 5E). Individuals with $A\beta 42/A\beta 40$ in the lowest quartile at baseline showed greater increases of $A\beta$ -PET CL at 2 years, compared to the other three quartiles ($P = .077$ for Q1 vs Q2, $P = .052$ Q1 vs Q3 and $P < .001$ Q1 vs Q4) (Fig. 5F), suggesting that baseline $A\beta 42/A\beta 40$ could be useful for risk-stratification of subjects.

Additionally, plasma $A\beta 42/A\beta 40$ at baseline was inversely correlated with progressive brain atrophy as determined by ventricular volume increment ($\rho = -0.230$, $P = .003$) (Fig. 5G). High-risk subjects presenting the lowest $A\beta 42/A\beta 40$ ratios at baseline showed greater increases of ventricular volume over 2 years ($P = .007$ for Q1 vs Q2, $P = .002$ Q1 vs Q3 and $P = .007$ Q1 vs Q4) (Fig. 5H). No association was found between baseline plasma $A\beta 42/A\beta 40$ and hippocampal volume changes at V2 (data not shown).

Discussion

In this study, we have presented strong evidence of the clinical performance of a novel MS-based method for the quantification of plasma $A\beta 42/A\beta 40$. We have proved that ABtest-MS, which overcomes the drawbacks of other MS-based methods due to its simplified workflow,

shows high accuracy, sensitivity and robustness for the detection of early pathological alterations in AD.

As expected and in line with multiple other studies [5, 6, 8, 20, 21], we found decreased plasma $A\beta 42/A\beta 40$ values in $A\beta$ -PET positive subjects. This reduction resulted in an 18% difference between groups, compared to the 6–14% variation reported in recent studies comparing multiple plasma $A\beta$ assays [11, 22]. The narrow dynamic range inherent to this plasma biomarker means that the clinical robustness of the $A\beta 42/A\beta 40$ ratio could be compromised if very-low-level variability assays are not used in order to assure maximum accuracy [12, 22].

ABtest-MS measures of plasma $A\beta 42/A\beta 40$ predicted $A\beta$ -PET status with an AUC of 0.87 and an overall accuracy of 81.5%. These results are similar or slightly superior to those previously reported by IP-MS-based methods in CU subjects, with AUCs ranging from 0.70 to 0.88 [10, 23–27] and accuracies of 72–75% [10, 24, 25]. Recent findings with a novel IP-MS method that removes the digestion step have also shown increased accuracy [28], supporting the hypothesis that simplified workflow results in potentially more robust assays and subsequent better discriminative accuracy.

The cutoff obtained by ABtest-MS at the maximum Youden index to discriminate between $A\beta$ -PET(-) and $A\beta$ -PET(+) subjects is not directly comparable to other cutoff values generated on other technology platforms due to several reasons: (1) ABtest-MS quantify intact

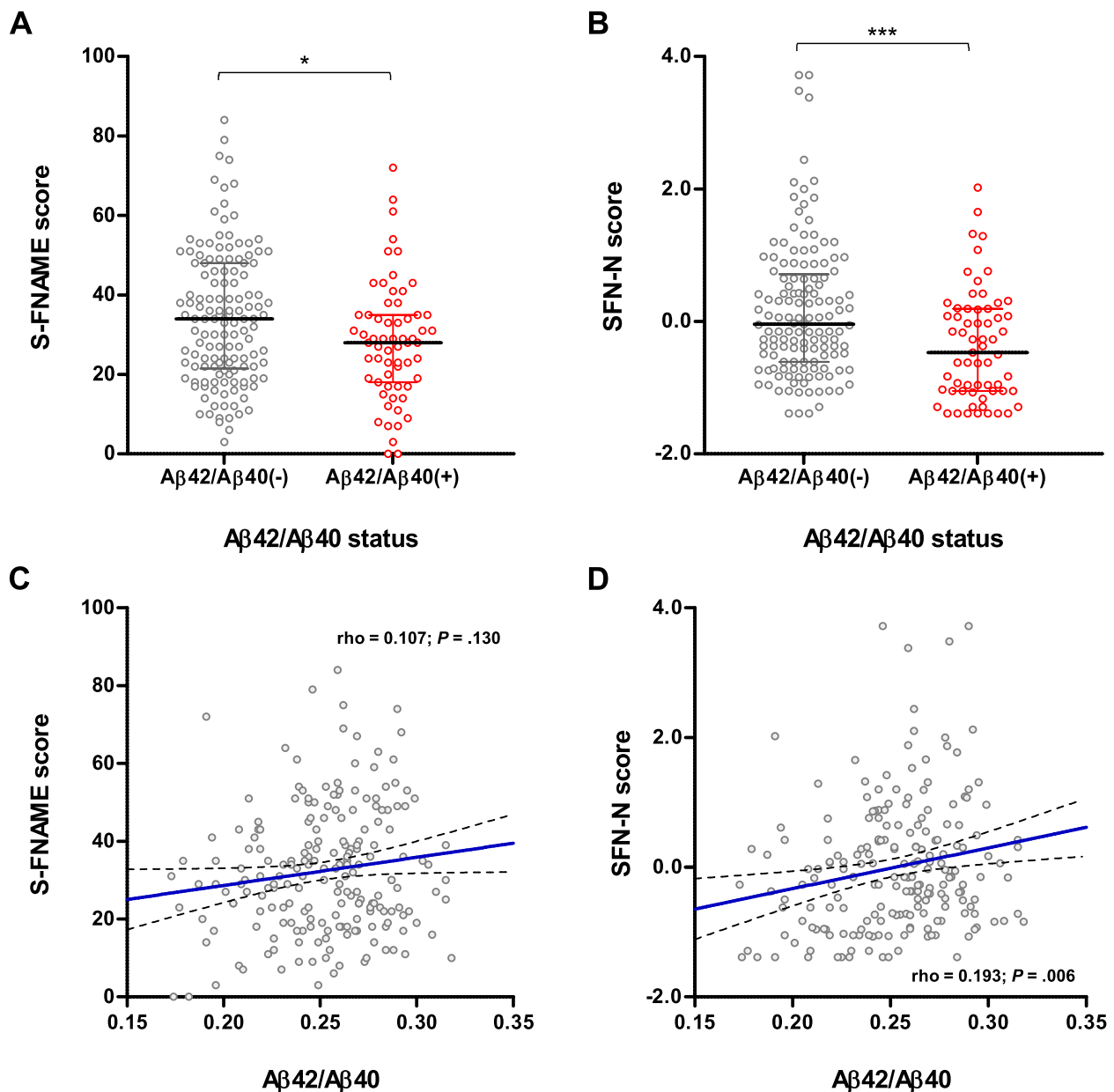


Fig. 4 Association of plasma $A\beta 42/A\beta 40$ with episodic memory performance. Participants were classified as plasma $A\beta 42/A\beta 40(+)$ or $A\beta 42/A\beta 40(-)$ by applying a cutoff of 0.241 corresponding to the maximum Youden index. **A, B** Distribution of S-FNAME total score (**A**) and SFN-N composite score (**B**) between $A\beta 42/A\beta 40(-)$ and $A\beta 42/A\beta 40(+)$ groups. Cognitive scores were compared between $A\beta 42/A\beta 40(-)$ and $A\beta 42/A\beta 40(+)$ groups using Mann-Whitney test. * $P < .05$; *** $P < .001$. Horizontal line depicts median and whiskers depict interquartile range. **C, D** Correlations between $A\beta 42/A\beta 40$ and S-FNAME total score (**C**) and SFN-N composite (**D**) score. Solid blue line represents the regression line; dashed lines represent 95% confidence interval

full-length $A\beta$ species, whereas other assays quantify truncated plus full $A\beta$ sequence; (2) the extraction method used in ABtest-MS is more aggressive and therefore is less susceptible to the non-covalent interactions of $A\beta$ peptides with other components of the plasma matrix and even antibodies; (3) calibration curves of ABtest-MS are prepared in the same matrix as the samples, i.e.

human plasma, in contrast to other assays which use saline solutions; (4) unlike CSE, there are no certified reference materials that would allow different assays to be recalibrated [29].

Concordance analyses between plasma $A\beta 42/A\beta 40$ ratio and $A\beta$ -PET status showed a greater number of false positive than false negative determinations, that is,

most of the discordant cases (86.5%) were plasma(+)/PET(−). This is in agreement with previous findings reported by our group [18] and others [10, 23, 24], and suggests that Aβ₄₂/Aβ₄₀ values in plasma decline before amyloid brain deposition is detectable by Aβ-PET imaging, and therefore, plasma Aβ₄₂/Aβ₄₀ may be a more sensitive biomarker in perceiving early changes in brain amyloidosis. Accordingly, we also found that subjects who converted to Aβ-PET positivity at 2-year follow-up presented significantly lower baseline plasma Aβ₄₂/Aβ₄₀ ratios than those who remained stable, suggesting that the plasma biomarker may be useful to identify individuals at risk of converting Aβ-PET status in the near future.

By combining the plasma Aβ₄₂/Aβ₄₀ ratio with age, sex and *APOE* ε4 number of alleles, the accuracy for identifying abnormal Aβ-PET status was significantly superior as compared to that of the base model. This means that the predictive ability of the plasma biomarker is additive to the risk information provided by the demographic covariates, and the resulting model achieves an AUC of 0.89. These results confer this biomarker a practical utility as a tool to assist in early diagnosis.

The high sensitivity (86.1%) and negative predictive value (96.4%) obtained suggest that plasma Aβ₄₂/Aβ₄₀ measured with this novel high-sensitivity assay could be a valuable pre-screening tool for identification of potentially eligible subjects for clinical trials or anti-amyloid therapies, such as the recently conditional approved by FDA, Aduhelm [30], or other upcoming treatments. Particularly, the implementation of a pre-screening step would be especially relevant in AD secondary prevention trials, where the low frequency of amyloid pathology in CU individuals results in screening failure rates up to 80% [31]. In this context and in agreement with previous observations from different cohorts of CU individuals [8, 10, 23, 32, 33], a pre-screening step with ABtest-MS in a recruitment scenario targeting the Aβ-positive individuals with SCD (assuming the same prevalence of Aβ

positivity as in the FACEHBI cohort) could save 63% of the PET scans required, leading to reduced costs and accelerated clinical trial recruitment.

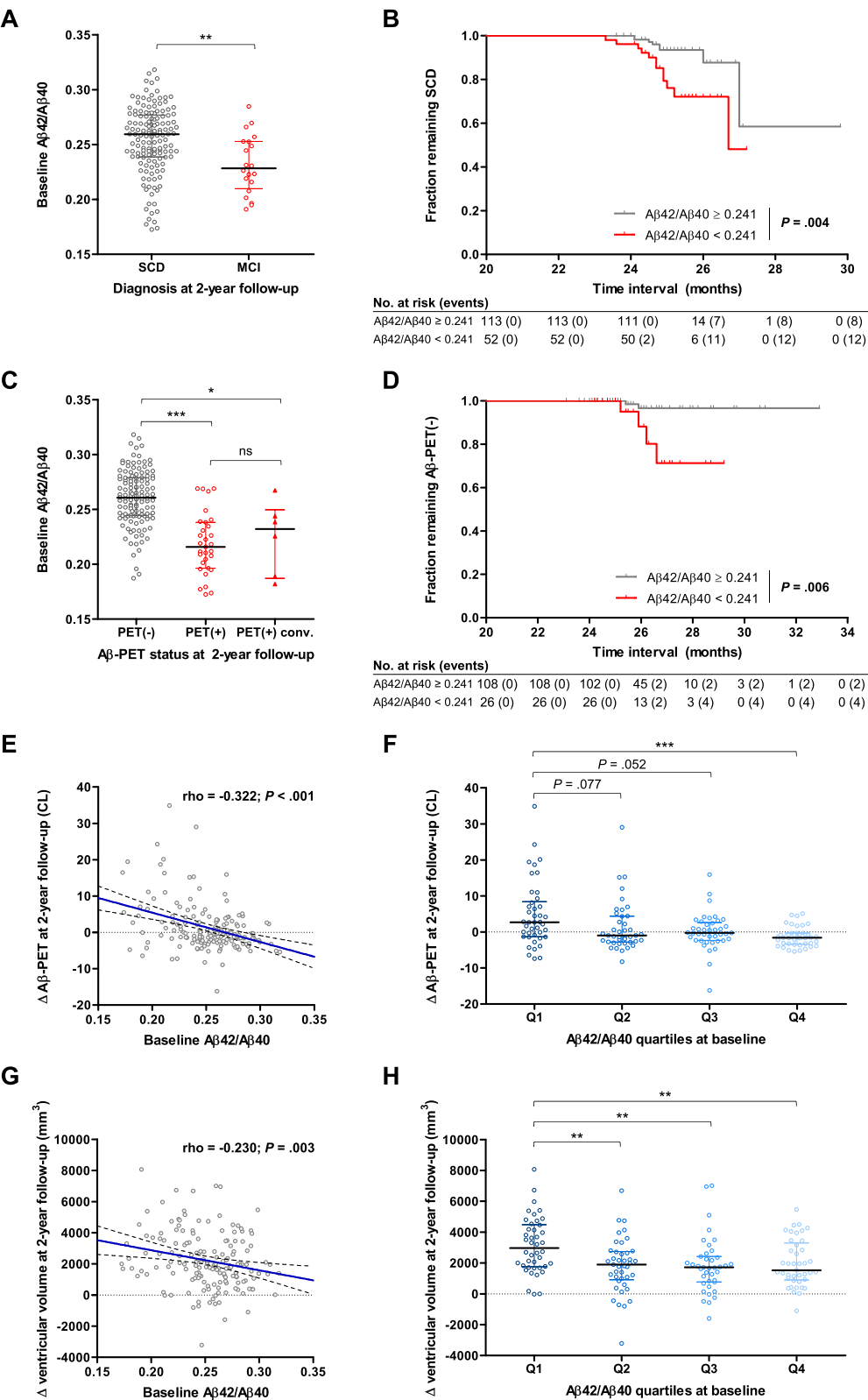
In the present study, we found that low plasma Aβ₄₂/Aβ₄₀ values were associated with worse episodic memory performance on the S-FNAME, a sensitive face-name associative memory test that has been previously associated to higher Aβ deposition in healthy adults with SCD [19]. Accordingly, the association was stronger with the SFN-N composite, the most sensitive subtest at detecting brain amyloid deposition. To our knowledge, this is the first time that plasma Aβ₄₂/Aβ₄₀ is shown to be cross-sectionally associated to cognitive measures in CU individuals with SCD. Previous studies have reported the absence of associations between plasma amyloid and cognitive functioning, probably due to insufficient sensitivity and robustness of the technologies used to quantify Aβ plasma peptides, i.e. immunoassay-based techniques [34, 35].

Additionally, we observed that individuals with low plasma Aβ₄₂/Aβ₄₀ values presented increased ventricular volume and, at some extent, reduced hippocampal volume, suggesting that the plasma biomarker, as determined by this novel method, can detect the first subtle changes in the AD neurodegeneration process. Similarly to previous studies showing no association of plasma Aβ₄₂/Aβ₄₀ with total brain, grey, and white matter volumes in cognitively normal elderly individuals [36], no significant correlations were found between plasma Aβ₄₂/Aβ₄₀ ratio and ventricular and hippocampal volumes in our study population. These observations could be attributed to the very early stage within the AD continuum of the FACEHBI cohort.

FACEHBI is a longitudinal long-term study with repeated evaluations of cognition and biomarkers. We performed an exploratory assessment of the ability of plasma Aβ₄₂/Aβ₄₀ ratio at baseline to predict disease progression over 2 years. We found that individuals who progressed to

(See figure on next page.)

Fig. 5 Association of plasma Aβ₄₂/Aβ₄₀ at baseline with longitudinal measures of clinical diagnosis, brain amyloid deposition and brain atrophy at 2-year follow-up. **A** Distribution of plasma Aβ₄₂/Aβ₄₀ levels at baseline between subjective cognitive decline (SCD) and mild cognitive impairment (MCI) individuals at 2-year follow-up. Plasma Aβ₄₂/Aβ₄₀ levels were compared between SCD and MCI groups using Mann Whitney test. ** $P < .01$. Horizontal line depicts median and whiskers depict interquartile range. **B** Kaplan-Meier curves showing fraction of individuals remaining SCD. P value of log-rank test is depicted in the lower right. **C** Distribution of plasma Aβ₄₂/Aβ₄₀ levels at baseline between Aβ-PET(−), Aβ-PET(+) and Aβ-PET(+) converter subjects at 2-year follow-up. Aβ-PET(+) converter subjects were defined as individuals who converted from Aβ-PET(−) at baseline to Aβ-PET(+) at 2-year follow-up. Plasma Aβ₄₂/Aβ₄₀ levels were compared among groups using Kruskal-Wallis test followed by the Dunn's pairwise test with adjustment for multiple comparisons. * $P < .05$; *** $P < .001$. Horizontal line depicts median and whiskers depict interquartile range. **D** Kaplan-Meier curves showing fraction of individuals remaining Aβ-PET(−). P value of log-rank test is depicted in the lower right. **E, G** Correlations between plasma Aβ₄₂/Aβ₄₀ at baseline and amyloid accumulation (**E**) and brain atrophy (**G**) at 2-year follow-up, as determined by Aβ-PET CL and ventricular volume increments. Solid blue line represents the regression line; dashed lines represent 95% confidence interval. **F, H** Distribution of Aβ-PET CL (**F**) and ventricular volume (**H**) increments among the quartiles of plasma Aβ₄₂/Aβ₄₀ at baseline. Aβ-PET CL and ventricular volume increments were compared using Kruskal-Wallis test followed by the Dunn's pairwise test with adjustment for multiple comparisons. ** $P < .01$; *** $P < .001$. Horizontal line depicts median and whiskers depict interquartile range. Abbreviations: CL, centiloid; Δ, increment; MCI, mild cognitive impairment; ns, non-significant; Q, quartile; SCD, subjective cognitive decline



MCI presented lower baseline levels of plasma A β 42/A β 40 than cognitively stable participants. These findings are highly concordant with previous studies reporting strong associations between low plasma A β 42/A β 40 values and increased risk of progression to MCI and/or AD dementia in CU individuals [33, 35, 37, 38]. Additionally and in line with other studies, we also found significant associations of plasma A β 42/A β 40 at baseline with longitudinal measures of amyloid brain accumulation [23, 32, 33] and brain atrophy [39, 40]. Altogether, these findings suggest that the measurement of plasma A β 42/A β 40 could be helpful in clinical practice to predict short-term disease progression in the preclinical stage of AD.

Over the last few years, other blood-based biomarkers, particularly different phosphorylated forms of tau, have emerged with promising results and are under extensive investigation [41–45]. However, recent evidence suggests that plasma A β 42/A β 40 could be the most accurate biomarker in the very early stages of the disease [10, 11, 25, 46], in accordance with previous observations in CSF samples in which A β 42/A β 40 was the first altered biomarker in the AD continuum [47, 48]. Further studies should address the diagnostic ability of ABtest-MS measures of plasma A β 42/A β 40 in combination with other plasma biomarkers at different stages of AD.

Among the strengths of this study are the characteristics of the FACEHBI cohort, a well-defined and homogeneous population comprised of individuals with cognitive complaints but no objective deficits on a standardized neuropsychological battery. In our opinion, this highly relevant population would especially benefit from appropriate screening and monitoring in clinical practice. Another strength is the use of a highly sensitive and robust MS-based technology, together with an extensively standardized pre-analytical protocol, which assures more consistent and reliable measurements [49]. The robustness of the clinical performance of the assay has been proved since the cross-sectional results at V2 were highly consistent.

Limitations

Limitations of the present study include the relatively modest population size recruited in a single centre, which may preclude the extrapolation of results to a more heterogeneous population-based sample. However, since all cognitive and biomarker assessments have been collected and processed homogeneously, data uniformity is guaranteed. Furthermore, the generalizability of the results has already been demonstrated at some extent in this study since the model established in the FACEHBI cohort was applied to the independent validation DPUK-Korean cohort with equivalent accuracy. Another limitation to

be mentioned is that, at this time, only data at 2-year follow-up is available, which is relatively short for expecting progression in subjects with SCD. However, ABtest-MS measures of plasma A β 42/A β 40 have shown to be able to capture changes, not only in amyloid deposition, but also in cognition and neurodegeneration within the 2-year time frame. Furthermore, and since the follow-up of the FACEHBI cohort is currently ongoing, valuable longitudinal information about the ability of plasma A β 42/A β 40 ratio to predict clinical and neuropathological changes in the AD continuum will be obtained from successive visits.

Conclusions

In conclusion, in the current study, we have demonstrated that plasma A β 42/A β 40, as determined by this innovative MS-based assay, has potential value as an accurate and cost-effective tool to identify individuals in the earliest stages of the AD continuum, supporting its implementation in clinical trials, preventative strategies and clinical practice. Further investigations are needed to validate the longitudinal performance of ABtest-MS.

Abbreviations

A β	Amyloid- β
AD	Alzheimer's disease
APOE	Apolipoprotein E
AUC	Area under the ROC curve
CI	Confidence interval
CL	Centiloid
FBB	¹⁸ F-Florbetaben
IP-MS	Immunoprecipitation-MS method
MS	Mass spectrometry
MCI	Mild cognitive impairment
MRI	Magnetic resonance imaging
PET	Positron emission tomography
ROC	Receiver operating characteristic
SCD	Subjective cognitive decline
S-FNAME	Spanish version of the Face-Name Associative Memory Exam
SFN-N	Derived composite S-FNAME Name

Supplementary Information

The online version contains supplementary material available at <https://doi.org/10.1186/s13195-022-01143-z>.

Additional file 1: Supplementary Methods. Supplementary Table 1. Plasma A β 42/A β 40 mass spectrometry methods. **Supplementary Table 2.** Sensitivity and parallelism of ABtest-MS. **Supplementary Table 3.** Accuracy and precision of ABtest-MS for ¹⁵N-A β 40 and ¹⁵N-A β 42 (Calibration curves). **Supplementary Table 4.** Accuracy and precision of ABtest-MS for ¹⁵N-A β 40 and ¹⁵N-A β 42 (Quality Control samples). **Supplementary Table 5.** Participant characteristics of the FACEHBI cohort at two-year follow-up. **Supplementary Table 6.** Participant characteristics of the validation cohort (DPUK-Korea). **Supplementary Figure 1.** ROC curves of plasma A β 40 and A β 42 for identifying A β -PET status. **Supplementary Figure 2.** Diagnostic performance of plasma A β 42/A β 40 at two-year follow-up. **Supplementary Figure 3.** Association of plasma A β 42/A β 40 with brain atrophy. **Supplementary Figure 4.** Association of plasma A β 42/A β 40 at baseline with clinical diagnosis and A β -PET status at two-year follow-up. **Supplementary References.**

Acknowledgements

We acknowledge all volunteers participating in the FACEHBI study for their generosity. We thank all FACEHBI sponsors for making this project possible and all of the investigators from ACE Alzheimer Center Barcelona, Hospital Clínic i Provincial de Barcelona, Clínica Corachan and Life Molecular Imaging GmbH for their close collaboration and continuous intellectual input. We also wish to thank Dr Pedro Pesini (retired employee of Araclon Biotech-Grifols) for his contribution in the design of this study and continuous scientific guidance. The FACEHBI study group:

Aguilera N¹, Alarcón-Martín E¹, Alegret M^{1,2}, Alonso-Lana S^{1,2}, Berthier M², Bojayrin U¹, Buendia M¹, Bullich S³, Campos F⁴, Cano A¹, Cañabate P^{1,2}, Cañada L¹, Cuevas C¹, de Rojas I¹, Diego S¹, Espinosa A^{1,2}, Esteban-De Antonio E¹, Gailhaguet A¹, García-Sánchez A¹, García P¹, Giménez J⁵, Gómez-Chiari M⁵, Guitart M¹, Hernández I^{1,2}, Ibarria, M¹, Lafuente A¹, Leonart N¹, Lomeña F⁴, Martín E¹, Moreno M¹, Morera A¹, Montreal L¹, Muñoz N¹, Narvaiza L¹, Niñerola A⁴, Nogales AB¹, Núñez L⁶, Orellana A¹, Ortega G¹, Pérez A⁶, Pancho A¹, Pelejà E¹, Pérez E³, Pérez-Cordon A¹, Perissinotti A⁴, Preckler S¹, Pytel V¹, Ricciardi M¹, Rodríguez-Gómez O¹, Roé-Vellvé N³, Ramis M¹, Rosende-Roca M¹, Seguer S¹, Sotolongo-Grau O¹, Stephens A³, Tejero MA⁵, Torres M⁶, Valero S^{1,2}, Vargas L¹, Vivas A⁵.

¹ Ace Alzheimer Center Barcelona – Universitat Internacional de Catalunya, Barcelona, Spain

² CIBERNED, Network Center for Biomedical Research in Neurodegenerative Diseases, National Institute of Health Carlos III, Madrid, Spain

³ Life Molecular Imaging GmbH, Berlin, Germany

⁴ Servei de Medicina Nuclear, Hospital Clínic i Provincial, Barcelona, Spain

⁵ Departament de Diagnòstic per la Imatge, Clínica Corachan, Barcelona, Spain

⁶ Grifols, Barcelona, Spain

⁷ Cognitive Neurology and Aphasia Unit (UNCA), University of Malaga, Malaga, Spain

Authors' contributions

MPL analysed and interpreted the data, performed the statistical analysis and drafted the manuscript. JAA and LS acquired and interpreted the data and revised the manuscript for intellectual content. NF and SC interpreted the data and revised the manuscript for intellectual content. JT, MS, JPT, AS and LT participated in the study design and the conceptualization of the study. SWS and HJ are responsible for the DPUK-Korean cohort and revised the manuscript for intellectual content. AR, MM and MB designed and conceptualized the study and revised the manuscript for intellectual content. All authors read and approved the final manuscript.

Funding

Funds from Ace Alzheimer Center Barcelona, Grifols, Life Molecular Imaging GmbH, Laboratorios Echevarne S.A. and Araclon Biotech are supporting the FACEHBI study. This study was also funded by Instituto de Salud Carlos III (ISCIII) Acción Estratégica en Salud, integrated in the Spanish National RCDCI Plan and financed by ISCIII-Subdirección General de Evaluación and the Fondo Europeo de Desarrollo Regional (FEDER-Una manera de hacer Europa) grant PI17/01474 awarded to MB, grants AC17/00100 and PI19/01301 awarded to AR, and grant PI19/00335 awarded to MM, and by the European Union Joint Programme – Neurodegenerative Disease Research (JPND) Multinational research projects on Personalised Medicine for Neurodegenerative Diseases/ Instituto de Salud Carlos III grant AC19/00097 awarded to AR.

Availability of data and materials

The datasets generated and/or analysed during the current study can be made available by the corresponding author upon approved reasonable request.

Declarations

Ethics approval and consent to participate

All participants gave written informed consent according to the principles of the Declaration of Helsinki, and the study protocols were approved by the ethics committee of the Hospital Clínic i Provincial (Barcelona, Spain) and by the institutional review board of Samsung Medical Center (Seoul, Korea).

Consent for publication

Not applicable.

Competing interests

MPL, JAA, LS, NF, SC and JT are full-time employees at Araclon Biotech-Grifols. AR has consulted for Grifols, Prevail Therapeutics and Landsteiner Genemed. He reports grants/research funding from Abbvie, Janssen, Grifols and Fundación Bancaria LaCaixa. AR has stocks in Landsteiner Genemed. MB has consulted for Araclon, Avid, Grifols, Lilly, Nutricia, Roche, Eisai and Servier. She received fees from lectures and funds for research from Araclon, Biogen, Grifols, Nutricia, Roche and Servier. She reports grants/research funding from Abbvie, Araclon, Biogen Research Limited, Bioiberica, Grifols, Lilly, S.A, Merck Sharp & Dohme, Kyowa Hakko Kirin, Laboratorios Servier, Nutricia SRL, Oryzon Genomics, Piramal Imaging Limited, Roche Pharma SA, and Schwabe Farma Iberica SLU, all outside the submitted work. She has not received personal compensations from these organizations. JPT, AS, LT, MM, SWS and HJ report no disclosures.

Author details

¹ Araclon Biotech-Grifols, Zaragoza, Spain. ² Ace Alzheimer Center Barcelona - Universitat Internacional de Catalunya, Barcelona, Spain. ³ CIBERNED, Network Center for Biomedical Research in Neurodegenerative Diseases, National Institute of Health Carlos III, Madrid, Spain. ⁴ Department of Neurology, Samsung Medical Center, Sungkyunkwan University School of Medicine, Seoul, South Korea.

Received: 20 October 2022 Accepted: 14 December 2022

Published online: 05 January 2023

References

1. Dementia: World Health Organization. 2021. Available from: <https://www.who.int/news-room/fact-sheets/detail/dementia>. Accessed 26 July 2022.
2. Mattsson N, Lönnberg A, Boccardi M, Blennow K, Hansson O. Clinical validity of cerebrospinal fluid Aβ42, tau, and phospho-tau as biomarkers for Alzheimer's disease in the context of a structured 5-phase development framework. *Neurobiol Aging*. 2017;52:196–213.
3. Laforce R Jr, Soucy JP, Sellami L, Dallaire-Theroux C, Brunet F, Bergeron D, et al. Molecular imaging in dementia: Past, present, and future. *Alzheimers Dement*. 2018;14(11):1522–52.
4. Wang X, Sun Y, Li T, Cai Y, Han Y. Amyloid-β as a Blood Biomarker for Alzheimer's Disease: A Review of Recent Literature. *J Alzheimers Dis*. 2020;73(3):819–32.
5. Ovod V, Ramsey KN, Mawuenyega KG, Bollinger JG, Hicks T, Schneider T, et al. Amyloid β concentrations and stable isotope labeling kinetics of human plasma specific to central nervous system amyloidosis. *Alzheimers Dement*. 2017;13(8):841–9.
6. Nakamura A, Kaneko N, Villemagne VL, Kato T, Doecke J, Doré V, et al. High performance plasma amyloid-β biomarkers for Alzheimer's disease. *Nature*. 2018;554(7691):249–54.
7. Palmqvist S, Janelidze S, Stomrud E, Zetterberg H, Karl J, Zink K, et al. Performance of Fully Automated Plasma Assays as Screening Tests for Alzheimer Disease-Related β-Amyloid Status. *JAMA Neurol*. 2019;76(9):1060–9.
8. Doecke JD, Pérez-Grijalva V, Fandos N, Fowler C, Villemagne VL, Masters CL, et al. Total Aβ(42)/Aβ(40) ratio in plasma predicts amyloid-PET status, independent of clinical AD diagnosis. *Neurology*. 2020;94(15):e1580–e91.
9. Pannee J, Shaw LM, Korecka M, Waligorska T, Teunissen CE, Stoops E, et al. The global Alzheimer's Association round robin study on plasma amyloid β methods. *Alzheimer's Dement (Amsterdam, Netherlands)*. 2021;13(1):e12242.
10. Keshavan A, Pannee J, Karikari TK, Rodriguez JL, Ashton NJ, Nicholas JM, et al. Population-based blood screening for preclinical Alzheimer's disease in a British birth cohort at age 70. *Brain*. 2021;144(2):434–49.
11. Janelidze S, Teunissen CE, Zetterberg H, Allué JA, Sarasa L, Eichenlaub U, et al. Head-to-Head Comparison of 8 Plasma Amyloid-β 42/40 Assays in Alzheimer Disease. *JAMA Neurol*. 2021;78(11):1375–82.
12. Benedet AL, Brum WS, Hansson O, Karikari TK, Zimmer ER, Zetterberg H, et al. The accuracy and robustness of plasma biomarker models for amyloid PET positivity. *Alzheimers Res Ther*. 2022;14(1):26.
13. Rodríguez-Gómez O, Sanabria A, Pérez-Cordon A, Sanchez-Ruiz D, Abdelnour C, Valero S, et al. FACEHBI: A Prospective Study of Risk Factors, Biomarkers and Cognition in a Cohort of Individuals with Subjective

- Cognitive Decline. Study Rationale and Research Protocols. *J Prev Alzheimers Dis.* 2017;4(2):100–8.
14. Verberk IMW, Misdorp EO, Koelwijn J, Ball AJ, Blennow K, Dage JL, et al. Characterization of pre-analytical sample handling effects on a panel of Alzheimer's disease-related blood-based biomarkers: Results from the Standardization of Alzheimer's Blood Biomarkers (SABB) working group. *Alzheimers Dement.* 2022;18(8):1484–97.
 15. Rowe CC, Doré V, Jones G, Baxendale D, Mulligan RS, Bullich S, et al. (18) F-Florbetaben PET beta-amyloid binding expressed in Centiloids. *Eur J Nucl Med Mol Imaging.* 2017;44(12):2053–9.
 16. Bullich S, Roé-Vellvé N, Marquié M, Landau SM, Barthel H, Villemagne VL, et al. Early detection of amyloid load using (18)F-florbetaben PET. *Alzheimers Res Ther.* 2021;13(1):67.
 17. Ahn HJ, Chin J, Park A, Lee BH, Suh MK, Seo SW, et al. Seoul Neuropsychological Screening Battery-dementia version (SNSB-D): a useful tool for assessing and monitoring cognitive impairments in dementia patients. *J Korean Med Sci.* 2010;25(7):1071–6.
 18. Jang H, Kim JS, Lee HJ, Kim CH, Na DL, Kim HJ, et al. Performance of the plasma A β 42/A β 40 ratio, measured with a novel HPLC-MS/MS method, as a biomarker of amyloid PET status in a DPUK-KOREAN cohort. *Alzheimers Res Ther.* 2021;13(1):179.
 19. Sanabria A, Alegret M, Rodríguez-Gómez O, Valero S, Sotolongo-Grau O, Monté-Rubio G, et al. The Spanish version of Face-Name Associative Memory Exam (S-FNAME) performance is related to amyloid burden in Subjective Cognitive Decline. *Sci Rep.* 2018;8(1):3828.
 20. Perez-Grijalva V, Arbizu J, Romero J, Prieto E, Pesini P, Sarasa L, et al. Plasma A β 42/40 ratio alone or combined with FDG-PET can accurately predict amyloid-PET positivity: a cross-sectional analysis from the AB255 Study. *Alzheimers Res Ther.* 2019;11(1):96.
 21. Vergallo A, Mégret L, Lista S, Cavedo E, Zetterberg H, Blennow K, et al. Plasma amyloid β 40/42 ratio predicts cerebral amyloidosis in cognitively normal individuals at risk for Alzheimer's disease. *Alzheimers Dement.* 2019;15(6):764–75.
 22. Rabe C, Bittner T, Jethwa A, Suridjan I, Manuilova E, Friesenhahn M, et al. Clinical performance and robustness evaluation of plasma amyloid- β (42/40) prescreening. *Alzheimers Dement.* 2022.
 23. Schindler SE, Bollinger JG, Ovod V, Mawuenyega KG, Li Y, Gordon BA, et al. High-precision plasma β -amyloid 42/40 predicts current and future brain amyloidosis. *Neurology.* 2019;93(17):e1647–e59.
 24. West T, Kirmess KM, Meyer MR, Holubasch MS, Knapik SS, Hu Y, et al. A blood-based diagnostic test incorporating plasma A β 42/40 ratio, ApoE proteotype, and age accurately identifies brain amyloid status: findings from a multi cohort validity analysis. *Mol Neurodegener.* 2021;16(1):30.
 25. Tosun D, Veitch D, Aisen P, Jack CR Jr, Jagust WJ, Petersen RC, et al. Detection of β -amyloid positivity in Alzheimer's Disease Neuroimaging Initiative participants with demographics, cognition, MRI and plasma biomarkers. *Brain Commun.* 2021;3(2):fcb008.
 26. Li Y, Schindler SE, Bollinger JG, Ovod V, Mawuenyega KG, Weiner MW, et al. Validation of Plasma Amyloid- β 42/40 for Detecting Alzheimer Disease Amyloid Plaques. *Neurology.* 2022;98(7):e688–e99.
 27. Udeh-Momoh C, Zheng B, Sandebring-Matton A, Novak G, Kivipelto M, Jönsson L, et al. Blood Derived Amyloid Biomarkers for Alzheimer's Disease Prevention. *J Prev Alzheimers Dis.* 2022;9(1):12–21.
 28. Ni W, Jagust W, Wang D. Multiplex Mass Spectrometry Analysis of Amyloid Proteins in Human Plasma for Alzheimer's Disease Diagnosis. *J Proteome Res.* 2021;20(8):4106–12.
 29. Boulo S, Kuhlmann J, Andreasson U, Brix B, Venkataraman I, Herbst V, et al. First amyloid β 1–42 certified reference material for re-calibrating commercial immunoassays. *Alzheimers Dement.* 2020;16(11):1493–503.
 30. Alexander GC, Knopman DS, Emerson SS, Ovbiagele B, Kryscio RJ, Perlmutter JS, et al. Revisiting FDA Approval of Aducanumab. *N Engl J Med.* 2021;385(9):769–71.
 31. Sperling RA, Rentz DM, Johnson KA, Karlawish J, Donohue M, Salmon DP, et al. The A4 study: stopping AD before symptoms begin? *Sci Transl Med.* 2014;6(228):228fs13.
 32. Fandos N, Pérez-Grijalva V, Pesini P, Olmos S, Bossa M, Villemagne VL, et al. Plasma amyloid β 42/40 ratios as biomarkers for amyloid β cerebral deposition in cognitively normal individuals. *Alzheimer's Dement (Amsterdam, Netherlands).* 2017;8:179–87.
 33. Verberk IMW, Slot RE, Verfaillie SCJ, Heijst H, Prins ND, van Berckel BNM, et al. Plasma Amyloid as Prescreener for the Earliest Alzheimer Pathological Changes. *Ann Neurol.* 2018;84(5):648–58.
 34. Janelidze S, Stomrud E, Palmqvist S, Zetterberg H, van Westen D, Jeromin A, et al. Plasma β -amyloid in Alzheimer's disease and vascular disease. *Sci Rep.* 2016;6:26801.
 35. Verberk IMW, Hendriksen HMA, van Harten AC, Wesselman LMP, Verfaillie SCJ, van den Bosch KA, et al. Plasma amyloid is associated with the rate of cognitive decline in cognitively normal elderly: the SCIENCE project. *Neurobiol Aging.* 2020;89:99–107.
 36. Hilal S, Wolters FJ, Verbeek MM, Vanderstichele H, Ikram MK, Stoops E, et al. Plasma amyloid- β levels, cerebral atrophy and risk of dementia: a population-based study. *Alzheimers Res Ther.* 2018;10(1):63.
 37. de Wolf F, Ghanbari M, Licher S, McRae-McKee K, Gras L, Weverling GJ, et al. Plasma tau, neurofilament light chain and amyloid- β levels and risk of dementia; a population-based cohort study. *Brain.* 2020;143(4):1220–32.
 38. Cullen NC, Leuzy A, Janelidze S, Palmqvist S, Svenningsson AL, Stomrud E, et al. Plasma biomarkers of Alzheimer's disease improve prediction of cognitive decline in cognitively unimpaired elderly populations. *Nat Commun.* 2021;12(1):3555.
 39. Shen XN, Li JQ, Wang HF, Li HQ, Huang YY, Yang YX, et al. Plasma amyloid, tau, and neurodegeneration biomarker profiles predict Alzheimer's disease pathology and clinical progression in older adults without dementia. *Alzheimer's Dement (Amsterdam, Netherlands).* 2020;12(1):e12104.
 40. Simren J, Leuzy A, Karikari TK, Hye A, Benedet AL, Lantero-Rodriguez J, et al. The diagnostic and prognostic capabilities of plasma biomarkers in Alzheimer's disease. *Alzheimers Dement.* 2021;17(7):1145–56.
 41. Karikari TK, Pascoal TA, Ashton NJ, Janelidze S, Benedet AL, Rodriguez JL, et al. Blood phosphorylated tau 181 as a biomarker for Alzheimer's disease: a diagnostic performance and prediction modelling study using data from four prospective cohorts. *Lancet Neurol.* 2020;19(5):422–33.
 42. Janelidze S, Mattsson N, Palmqvist S, Smith R, Beach TG, Serrano GE, et al. Plasma P-tau181 in Alzheimer's disease: relationship to other biomarkers, differential diagnosis, neuropathology and longitudinal progression to Alzheimer's dementia. *Nat Med.* 2020;26(3):379–86.
 43. Thijssen EH, La Joie R, Wolf A, Strom A, Wang P, Iaccarino L, et al. Diagnostic value of plasma phosphorylated tau181 in Alzheimer's disease and frontotemporal lobar degeneration. *Nat Med.* 2020;26(3):387–97.
 44. Palmqvist S, Janelidze S, Quiroz YT, Zetterberg H, Lopera F, Stomrud E, et al. Discriminative Accuracy of Plasma Phospho-tau217 for Alzheimer Disease vs Other Neurodegenerative Disorders. *Jama.* 2020;324(8):772–81.
 45. Ashton NJ, Pascoal TA, Karikari TK, Benedet AL, Lantero-Rodriguez J, Brinkmalm G, et al. Plasma p-tau231: a new biomarker for incipient Alzheimer's disease pathology. *Acta Neuropathol.* 2021;141(5):709–24.
 46. Janelidze S, Palmqvist S, Leuzy A, Stomrud E, Verberk IMW, Zetterberg H, et al. Detecting amyloid positivity in early Alzheimer's disease using combinations of plasma A β 42/A β 40 and p-tau. *Alzheimers Dement.* 2022;18(2):283–93.
 47. McDade E, Wang G, Gordon BA, Hassenstab J, Benzinger TLS, Buckles V, et al. Longitudinal cognitive and biomarker changes in dominantly inherited Alzheimer disease. *Neurology.* 2018;91(14):e1295–e306.
 48. Palmqvist S, Insel PS, Stomrud E, Janelidze S, Zetterberg H, Brix B, et al. Cerebrospinal fluid and plasma biomarker trajectories with increasing amyloid deposition in Alzheimer's disease. *EMBO Mol Med.* 2019;11(12):e11170.
 49. Korecka M, Shaw LM. Mass spectrometry-based methods for robust measurement of Alzheimer's disease biomarkers in biological fluids. *J Neurochem.* 2021;159(2):211–33.

Publisher's Note

Springer Nature remains neutral with regard to jurisdictional claims in published maps and institutional affiliations.